

## Loading SoundFonts in VSampler

### To Load a Single File:

- Add an instance of VS into Sonar and make sure that it's set to VS (right side just above import)
- Use the disk browser and locate the files of interest.
- Drag & Drop each file to a bank/patch (e.g., Piano1 to Bank 1 P0)

VSampler's disk browser located just to the right of the bank/patch section. Look for the little silver ball (default = "Banks and Instruments"). Click the little ball and navigate to Disk Browser. Then, you can navigate to your files.

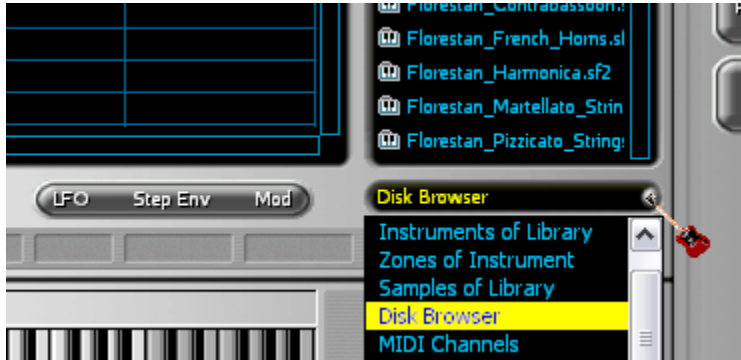


Figure 1 Gibson SG pointing to silver ball

### Complete Banks

- Add an instance of vSampler as described for Single Files
- Click the "Open Library" icon (located just below the word "File")
- Navigate to the complete bank of interest and double click

If drums are included, you should receive message they were imported to bank 128.

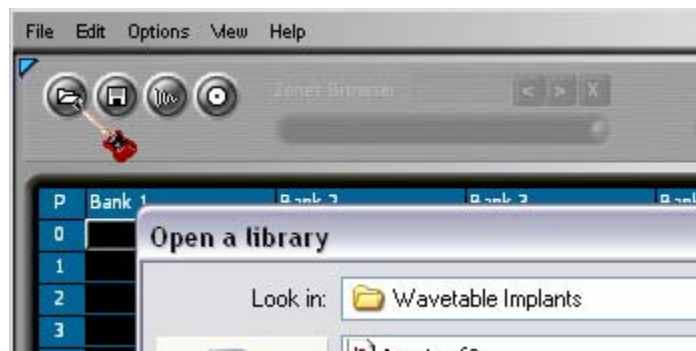


Figure 2 Gibson SG pointing to library icon

Alternate instructions available at <http://www.halowe-graphics.com/music.html> .

©2004 Hal Lowe. Visit Web Site for more great stuff! [Hal Lowe, HaloweGraphics Music Central](http://www.halowe-graphics.com/music.html)